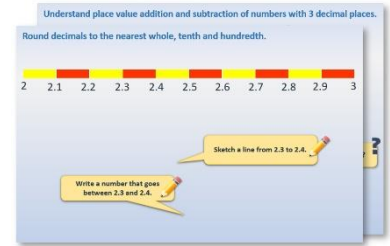


# Year 1: Week 4, Day 1

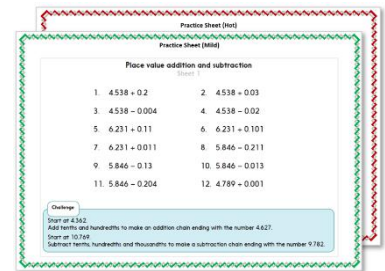
## Add 10s to 2-digit numbers

Each day covers one maths topic. It should take you about 1 hour or just a little more.

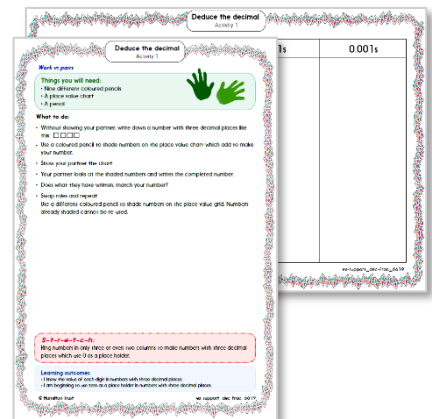
1. Start by reading through the **Learning Reminders**. They come from our *PowerPoint* slides.



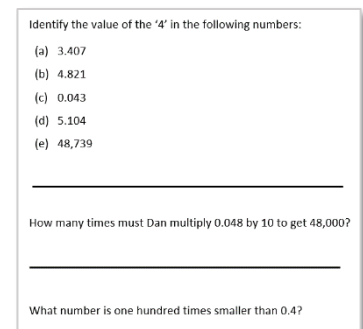
2. Tackle the questions on the **Practice Sheet**. There might be a choice of either **Mild** (easier) or **Hot** (harder)! Check the answers.



3. Finding it tricky? That's OK... have a go with a grown-up at **A Bit Stuck?**




4. Have I mastered the topic? A few questions to **Check your understanding**. Fold the page to hide the answers!



## Learning Reminders

Adding 10s to a 2-digit number.

1-100 number grid

1	2	3	4	5	6	7	8	9	10
 11	12	13	14	15	16	17	18	19	20
21	22	23	24	25	26	27	28	29	30
31	32	33	34	35	36	37	38	39	40
41	42	43	44	45	46	47	48	49	50
51	52	53	54	55	56	57	58	59	60
61	62	63	64	65	66	67	68	69	70
71	72	73	74	75	76	77	78	79	80
81	82	83	84	85	86	87	88	89	90
91	92	93	94	95	96	97	98	99	100

Can you remember  
how spider helps us  
to add?

Counting in 10s saves  
us having to count on  
in 1s, so makes  
counting a lot quicker!

What is 21  
add 20?

$$21 + 20 = 41$$

## Learning Reminders

Adding 10s to a 2-digit number.

1-100 number grid

1	2	3	4	5	6	7	8	9	10
11	12	13	14	15	16	17	18	19	20
21	22	23	24	25	26	27	28	29	30
31	32	33	34	35	36	37	38	39	40
41	42	43	44	45	46	47	48	49	50
51	52	53	54	55	56	57	58	59	60
61	62	63	64	65	66	67	68	69	70
71	72	73	74	75	76	77	78	79	80
81	82	83	84	85	86	87	88	89	90
91	92	93	94	95	96	97	98	99	100

Let's try  
26 add 30.

Where do you  
think Spider will  
land?

$$26 + 30 = 56$$

## Learning Reminders

Adding 10s to a 2-digit number.

1-100 number grid

1	2	3	4	5	6	7	8	9	10
11	12	13	14	15	16	17	18	19	20
21	22	23	24	25	26	27	28	29	30
31	32	33	34	35	36	37	38	39	40
41	42	43	44	45	46	47	48	49	50
51	52	53	54	55	56	57	58	59	60
61	62	63	64	65	66	67	68	69	70
71	72	73	74	75	76	77	78	79	80
81	82	83	84	85	86	87	88	89	90
91	92	93	94	95	96	97	98	99	100

Can we do **?**  
27 add 40?

Where do you **?**  
think Spider  
will land?



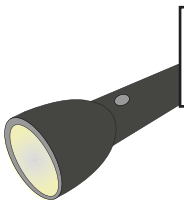



$$27 + 40 = 67$$

## Practice Sheet Mild

### Adding tens



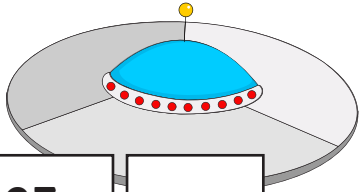
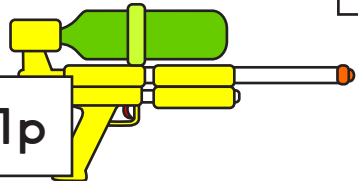
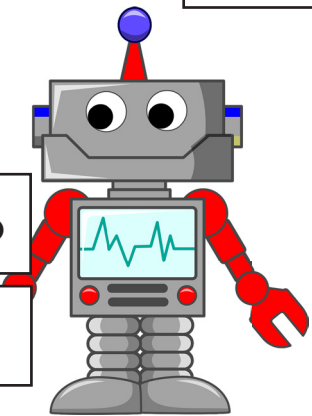

#### Part A

The toy shop needs to increase all of its prices by 10p.  
Can you work out the new prices?

			
39p	48p	51p	33p
<input type="text"/>	<input type="text"/>	<input type="text"/>	<input type="text"/>
			
11p	26p		
<input type="text"/>	<input type="text"/>		

#### Part B

The toy shop needs to increase all of its prices by 20p.  
Can you work out the new prices?

			
32p	17p	27p	
<input type="text"/>	<input type="text"/>	<input type="text"/>	
			
41p	43p	23p	
<input type="text"/>	<input type="text"/>	<input type="text"/>	

# Practice Sheet Hot

## Adding tens

### Part A

The toy shop needs to increase all of its prices by 40p.  
Can you work out the new prices?

A pink teddy bear with a price tag of 36p and an empty box below it.  
 A train with a price tag of 29p and an empty box below it.  
 A flashlight with a price tag of 39p and an empty box to its right.  
 A yellow and green water gun with a price tag of 47p and an empty box below it.  
 A yellow tennis ball with a price tag of 11p and an empty box below it.  
 A robot with a price tag of 58p and an empty box below it.

### Part B

These toys have had a price increase too but the owner cannot work out how much.

Boat

~~33p~~  
53p



How much has the price increased?



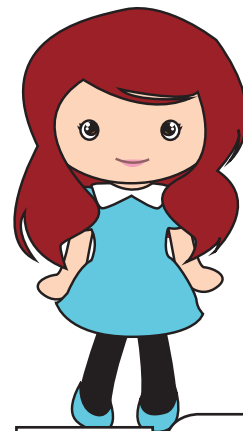
~~46p~~  
86p



~~62p~~  
92p



~~13p~~  
53p



~~29p~~  
79p



**Practice Sheets**  
**1-100 grid**

1	2	3	4	5	6	7	8	9	10
11	12	13	14	15	16	17	18	19	20
21	22	23	24	25	26	27	28	29	30
31	32	33	34	35	36	37	38	39	40
41	42	43	44	45	46	47	48	49	50
51	52	53	54	55	56	57	58	59	60
61	62	63	64	65	66	67	68	69	70
71	72	73	74	75	76	77	78	79	80
81	82	83	84	85	86	87	88	89	90
91	92	93	94	95	96	97	98	99	100

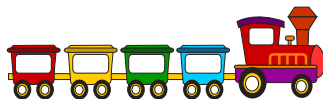
# Practice Sheets Answers

## Adding tens (mild)

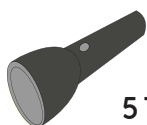
### Part A



$39p + 10p = 49p$



$48p + 10p = 58p$



$51p + 10p = 61p$



$26p + 10p = 36p$



$11p + 10p = 21p$



$33p + 10p = 43p$

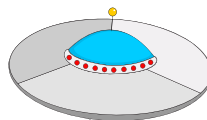
### Part B



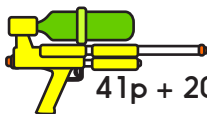
$32p + 20p = 52p$



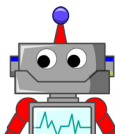
$17p + 20p = 37p$



$27p + 20p = 47p$



$41p + 20p = 61p$



$43p + 20p = 63p$



$23p + 20p = 43p$

## Adding tens (hot)

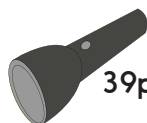
### Part A



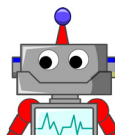
$36p + 40p = 76p$



$29p + 40p = 69p$



$39p + 40p = 79p$



$58p + 40p = 98p$



$47p + 40p = 87p$



$11p + 40p = 51p$

### Part B



$46p + 40p = 86p$



$62p + 30p = 92p$



$13p + 40p = 53p$



$29p + 50p = 79p$



## A Bit Stuck? Spider adds

*Work in pairs*

### Things you will need:

- A 1-100 grid
- A spider
- Spider sums
- A pencil



### What to do:

- Choose a Spider sum.
- Place Spider on the first number in the sum.
- Use Spider to add 10. Write the answer in the sum.
- Repeat for as many sums as you can.

### *S-t-r-e-t-c-h:*

Make up some of your own Spider sums.

### Learning outcomes:

- I can use Spider to add 10 to 2-digit numbers.

**A Bit Stuck?**  
Spider adds

$18 + 10 =$

$24 + 10 =$

$27 + 10 =$

$38 + 10 =$

$36 + 10 =$

$50 + 10 =$

$42 + 10 =$

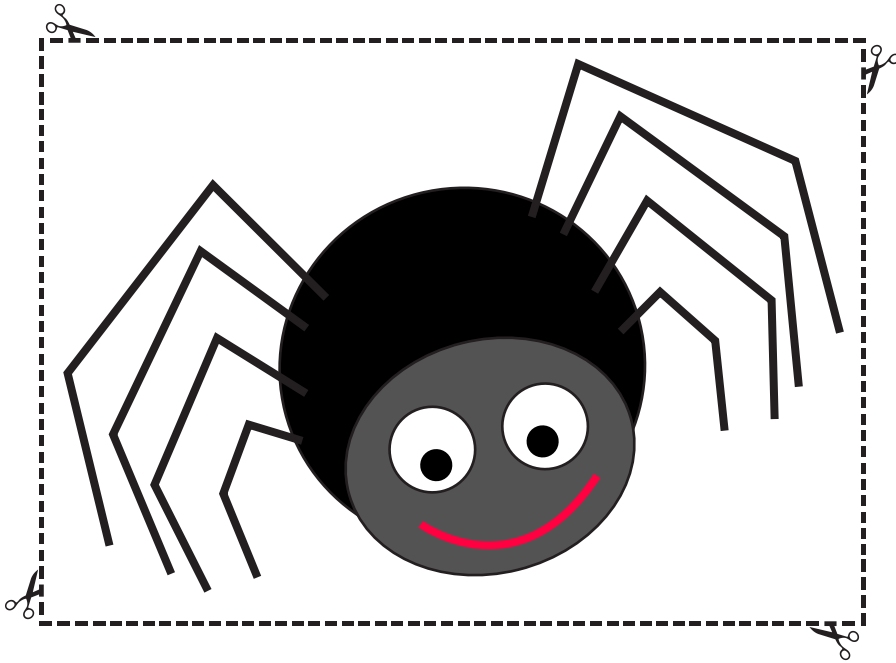
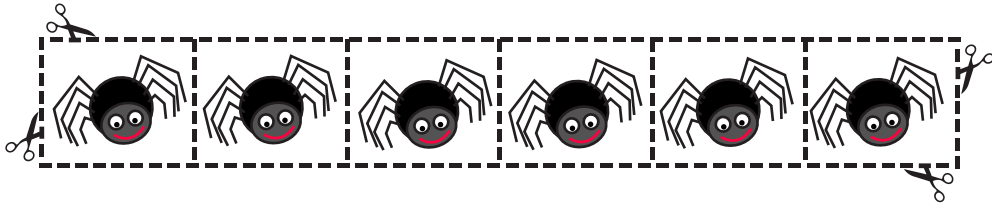
$85 + 10 =$



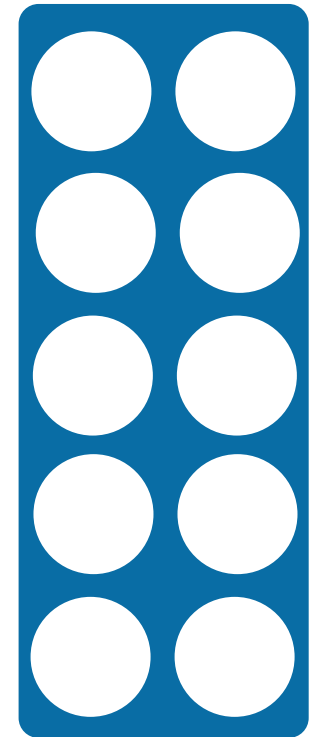
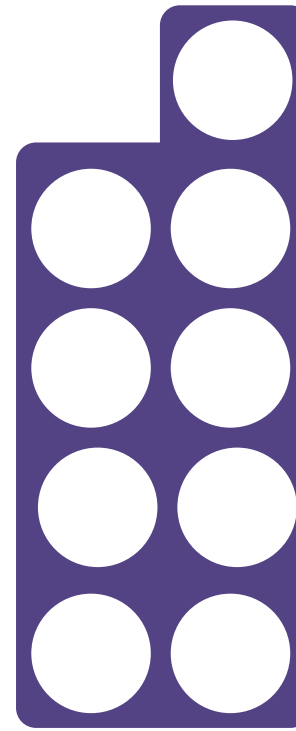
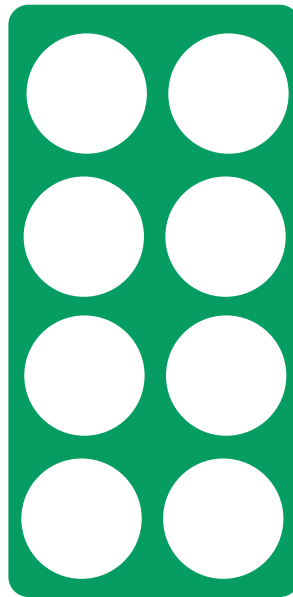
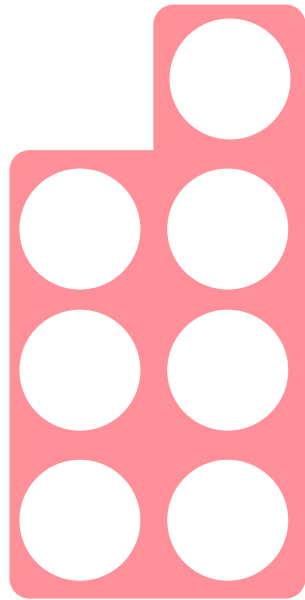
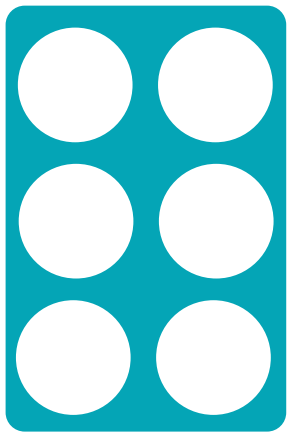
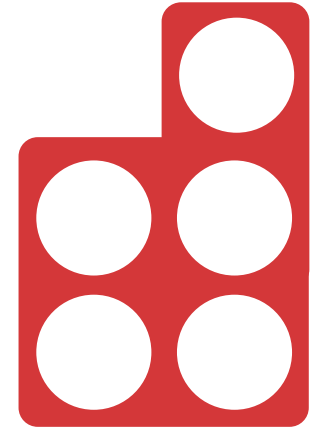
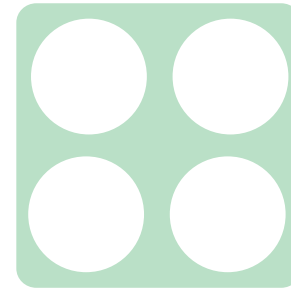
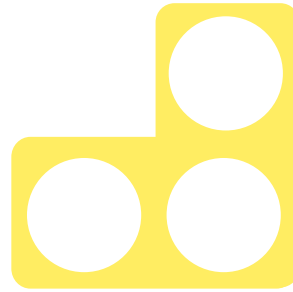
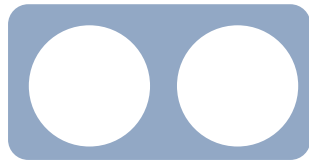
**A Bit Stuck?**  
**Spider adds**

1	2	3	4	5	6	7	8	9	10
11	12	13	14	15	16	17	18	19	20
21	22	23	24	25	26	27	28	29	30
31	32	33	34	35	36	37	38	39	40
41	42	43	44	45	46	47	48	49	50
51	52	53	54	55	56	57	58	59	60
61	62	63	64	65	66	67	68	69	70
71	72	73	74	75	76	77	78	79	80
81	82	83	84	85	86	87	88	89	90
91	92	93	94	95	96	97	98	99	100

**A Bit Stuck?**  
**Spider adds**



**A Bit Stuck?**  
**Spider adds**



## Check your understanding Questions

Complete each sentence.

$54 + 10 = \square$

$37 + \square = 47$

$42 + 20 = \square$

$\square + 20 = 83$

$66 + \square = 96$

---

Add 30 to each number:

53

24

18

46

Fold here to hide answers

---

---

## Check your understanding Answers

Complete each sentence.

$54 + 10 = 64$

$37 + 10 = 47$

$42 + 20 = 62$

$63 + 20 = 83$

$66 + 30 = 96$

Some children may find the questions with the missing number on the left hand side (what has to be added to 37 to equal 47) trickier.

---

Add 30 to each number:

53 83

24 54

18 48

46 76